

# Tips and Tricks for the installation of ClickFit.

1.

After placing all the roof hooks it is handy to spray all these roofhooks with a lubricant. For instance silicone spray or Teflon spray, it is not critical what you use.

By doing this the mounting rail will click more easily on the roof hooks



2.

Make sure that the mounting rail and the roof hooks are aligned and are well positioned.

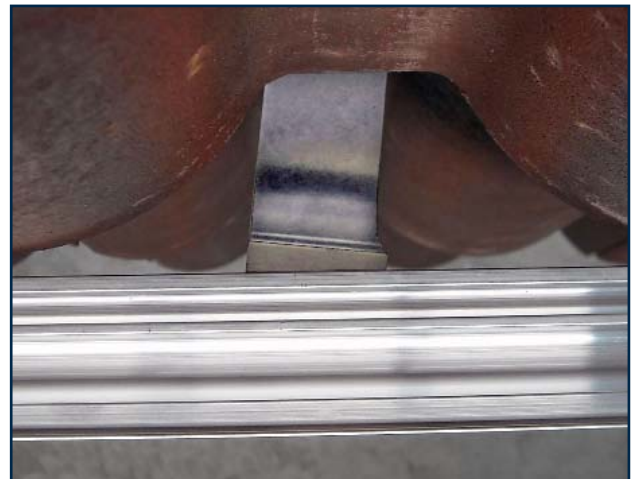
It can be useful to place a wooden wedge, flat chisel or a screwdriver underneath the roof hook when you click the mounting rail. By doing this the mounting rail will click more easily on the roof hooks



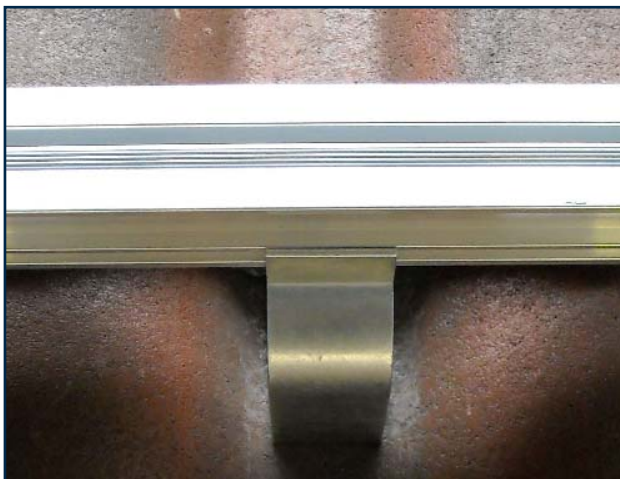
Top view - correct



Top view - not correct



Front view- correct



Front view - not correct

