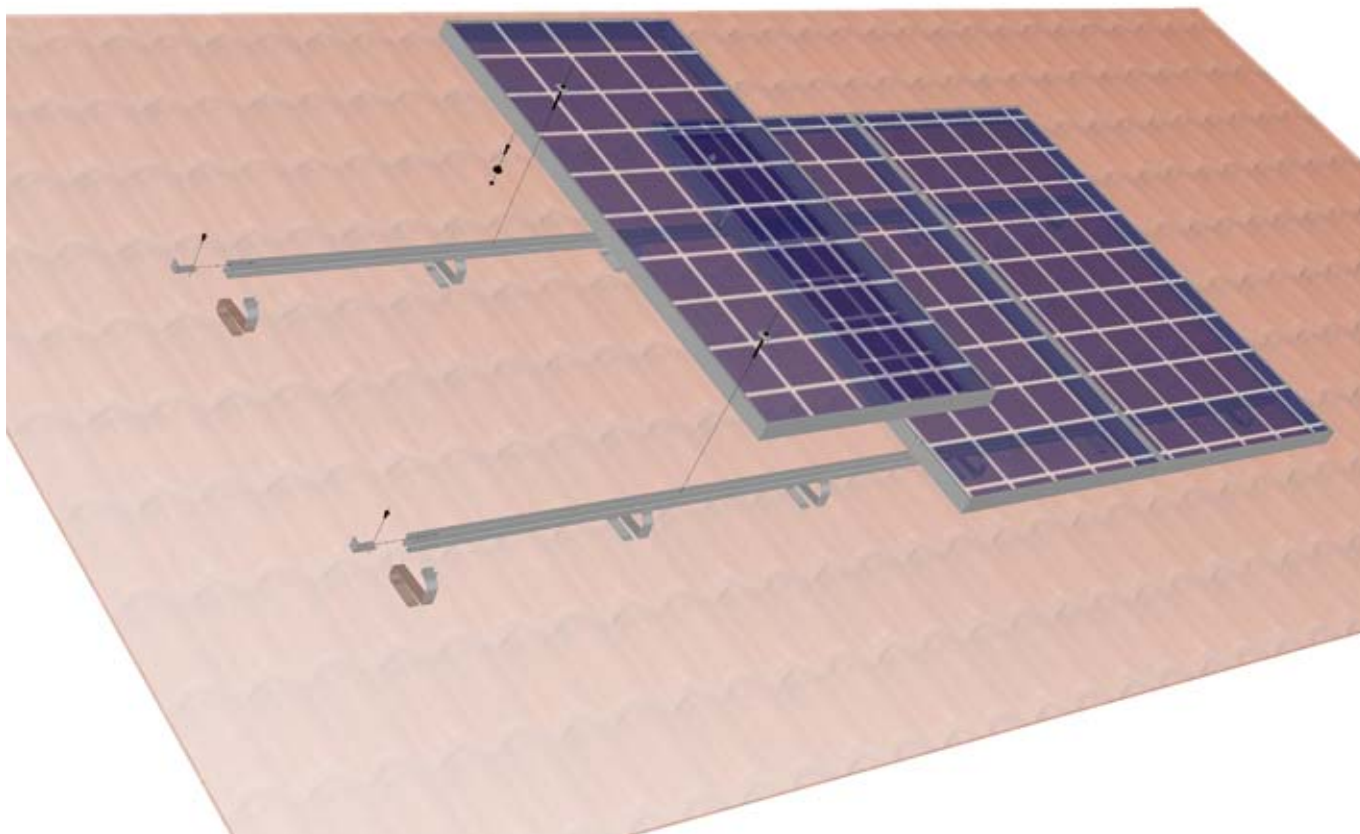


The ClickFit installation guide for tiled roofs

More info | www.click-fit.com



Material

A ClickFit assembly set contains the following items:

- | | |
|-------------------------------|-----------------------------|
| 1 roof hooks | 4 end clamp with screws |
| 2 mounting rail | 5 module clamps with screws |
| 3 coupling strips with screws | 6 Nylon slyves with screws |

Tools needed

- 1 Ratchet with socket 10

The ClickFit installation guide for tiled roofs

More info | www.click-fit.com



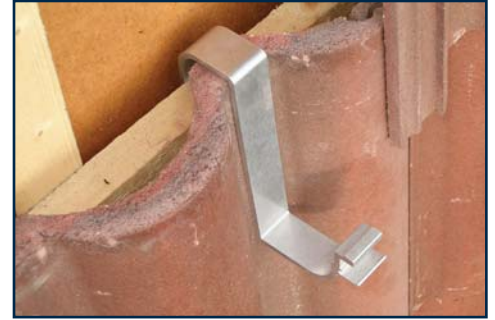
1. Preassembly of the nylon sleeves

Use the holes in the frame of the solar module to fix the nylon sleeves. Use the M6 nut and bolt to fixate the sleeves onto the solar panel at the same side as the connection box. The solar panel is temporarily mounted on the rail with the nylon sleeves. (see point 5.)



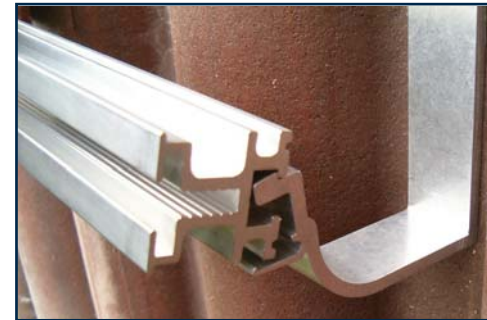
2. Preassembly of coupling strips

When combining multiple rails you have to use the coupling strips to extend the mounting rails. You simply slide the coupling strip in the side of the mounting rail and fixate it with the short mounting screws.



3. Placing the roof hooks

Divide the roof hooks evenly over the mounting rails. It is advised to place an extra roof hook in edge or corner zones. The roof hooks are placed over the battens and the roof tiles. Most of the times the roof tiles easily slide upwards underneath the upper laying roof tile. This gives you enough space to fixate the roof hook onto the batten in the lower part of the roof tile. This will fit in most of the times. In some occasions the roof tile needs to be grinded down a bit to make a snug fit. When the roof hooks are fixated slide the roof tile back into place. The next step is to determine where the next mounting rail will be mounted and place the roof hooks accordingly. The mounting rails are placed at $\frac{1}{4}$ from the bottom and top of the solar module.



4. Fixating the mounting rails

Hang the rails on the roof hooks. Click the mounting rail onto the roof hooks. Make sure that it Click is made firmly. It can be handy to use the mounting wedge which is placed between the roof hooks and the roof tile. This makes it easier to Click.



5. Hang the solar module on the rail

Temporarily hang the solar module on the rail with the nylon sleeves. As a result you have both hands free when mounting the solar modules.

Make sure that the mounting rails are aligned in one line above each other



6. Mounting the first panel on the mounting rails

You can now fixate the first module. Hang the module on to the mounting rail on the preassembled nylon sleeves. Slide the solar module to the side towards the end of the mounting rail. Slide the end clamp onto the mounting rail. Make sure you choose the right slot for the particular solar module frame height. Now fixate the solar module with the long mounting screws.



7. Mounting the other solar panels

Hang the second solar panel on the rail and slide it towards the first until a gap remains of about 7mm. Now fix the panel with the long screw and the module clamps. Make sure that the solar panels are aligned before tightening the screws. Repeat this with the remaining solar panels. For the mounting of the last solar panel see 6.



8. Mounting more rows of solar modules underneath each other

To get one solid surface of solar panels when there are multiple rows, you can slide the solar panels up after you hanged the on there sleeves against the upper row of solar panels. Now fixate the solar modules on the rails with the long mounting screws and the brackets.