

The ClickFit installation guide for bitumen roofs

More info | www.click-fit.com

Material

A ClickFit assembly set contains the following items:

- | | |
|-------------------------------------------------|--------------------------------------------------------------------|
| 1 Supports | 4 end hooks with short sheet metal screws and self drilling screws |
| 2 mounting rails | 5 long sheet metal screws with brackets |
| 3 coupling strips with short sheet metal screws | 6 nylon sleeves with bolts en nuts M6 |



Tools needed

- 1 Cordless Driver Drill with Philips screw bit
- 2 Ratchet with socket 10



1. Preassembly of the nylon sleeves

Use the holes in the frame of the solar module to fix the sleeves.

Fix the sleeves on the same side as the connection box. The solar module is temporarily mounted on the rail with these sleeves.



2. Preassembly of end hooks

The end hooks that you place at the ends of the mounting rail are for fixing the solar module on both ends of a row. You simply slide the end hook with the long leg in the side of the mounting rail and fix it with the short sheet metal screw.



3. Preassembly of coupling strips

When combining multiple rails you have to use the coupling strips. You simply slide the coupling strip in the side of the mounting rail and fix it with the short sheet metal screw.



4. Mounting supports on the rail

Click the supports at the desired place on the mounting rail.



5. Mounting the rails

Mount the rails with the already placed supports on the sloped bitumen roof with stainless steel screws (not supplied).

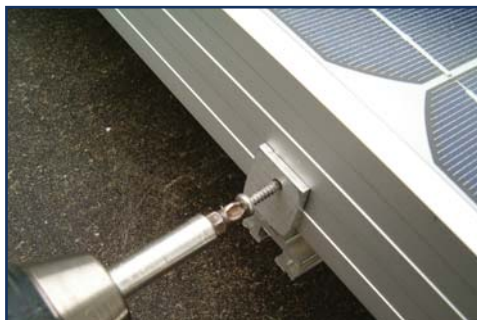
Important:

- 1 You have to use a circle of Tixophalte kit around the screw hole on the bottom side of the supports.
- 2 The rails have to be aligned. (One straight above the other)



6. Hang the solar module on the rail

Temporarily hang the solar module on the rail with the nylon sleeves. As a result you have both hands free when mounting the solar modules.



7. Mounting the first solar panel on the rails

Hang the first solar module on the rail on its sleeves. Slide it to the side against the end hooks. Fix the solar module with the self drilling screws.



8. Mounting the other solar panels

Hang the second solar panel on the rail and slide it towards the first until a gap remains of about 7mm. Now fix the panel with the long metal sheet screw and the bracket.

Watch out that the solar modules are aligned before tightening the screws.

Repeat this with the remaining solar panels.

For the mounting of the last solar panel see 7.